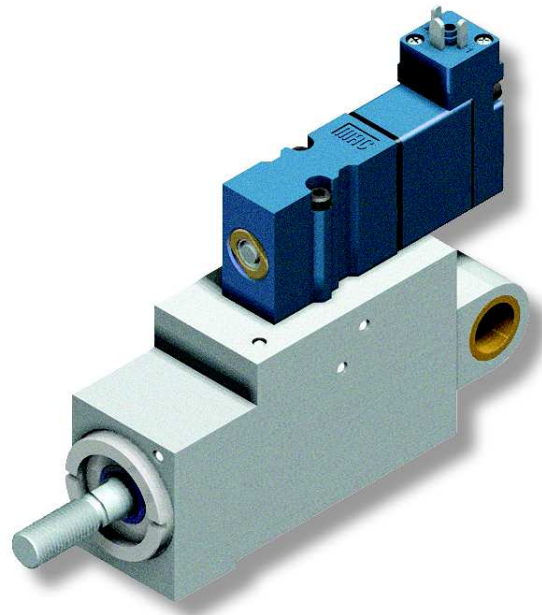


ML309880 (25x8.5)

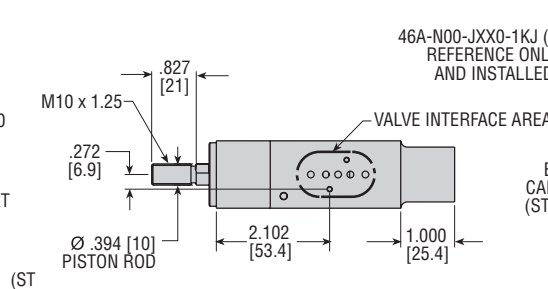
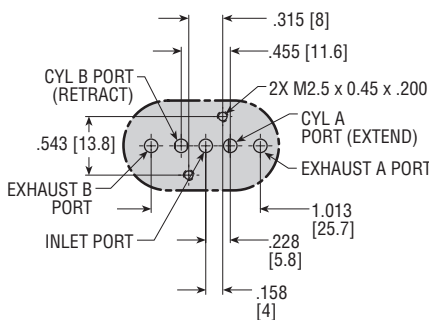
ML310656 (25x25)

MAJOR BENEFITS

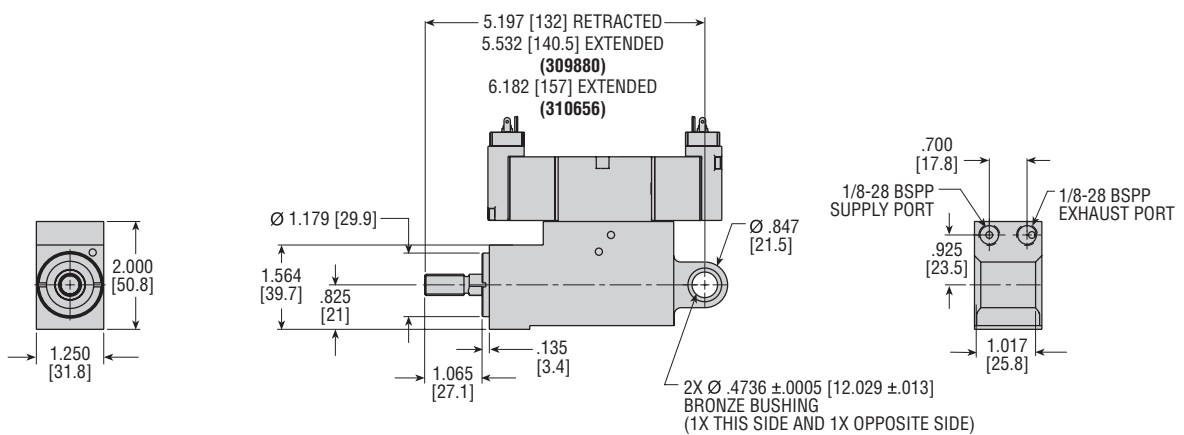
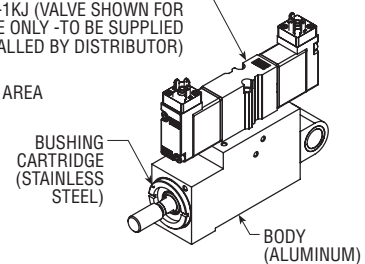
- Provides rapid repeatable ejection function due to MAC valve design and PHD cylinder.
- High kinetic energy capacity
- Provides faster delivery times than OEM product
- In many cases lower cost solution than OEM product
- Intended for high speed part rejection



VALVE INTERFACE AREA DETAIL



MAC VALVE PER 46A-N00-JXX0-1KJ (VALVE SHOWN FOR REFERENCE ONLY - TO BE SUPPLIED AND INSTALLED BY DISTRIBUTOR)



NOTE: UNIT TO ACCEPT SERIES 46 BASE MOUNT MAC VALVE PER MAC PART# 46A-N00-JXX0-1KJ.

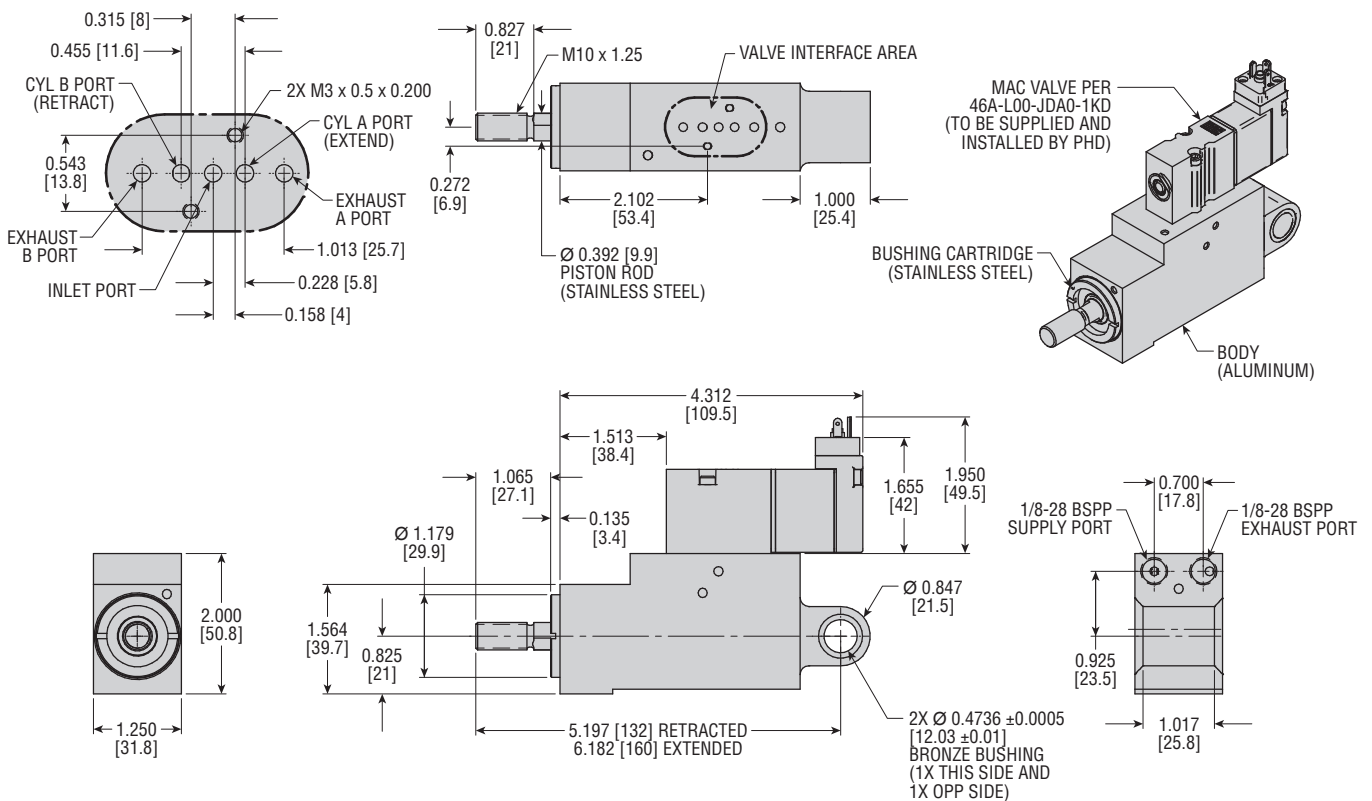
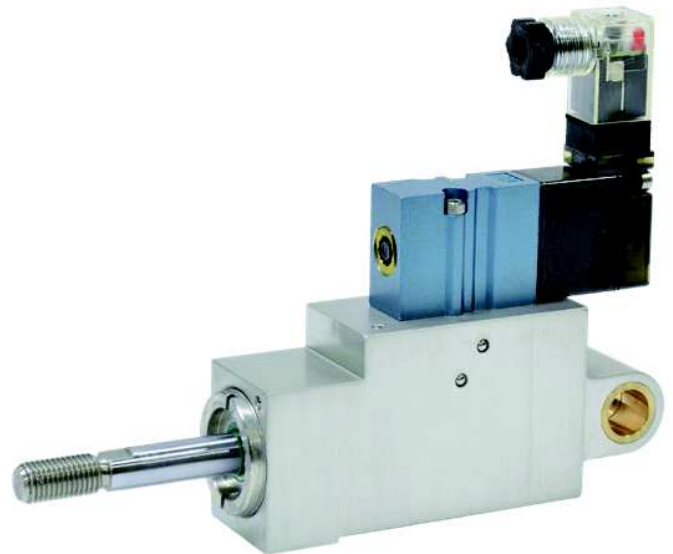
All dimensions are reference only unless specifically toleranced.

www.phdinc.com • (800) 624-8511

ML317407

MAJOR BENEFITS

- Provides rapid repeatable ejection function due to MAC valve design and PHD cylinder.
- High kinetic energy capacity
- Provides faster delivery times than OEM product
- Intended for high speed part rejection
- Unit comes with 25 mm bore x 25 mm stroke

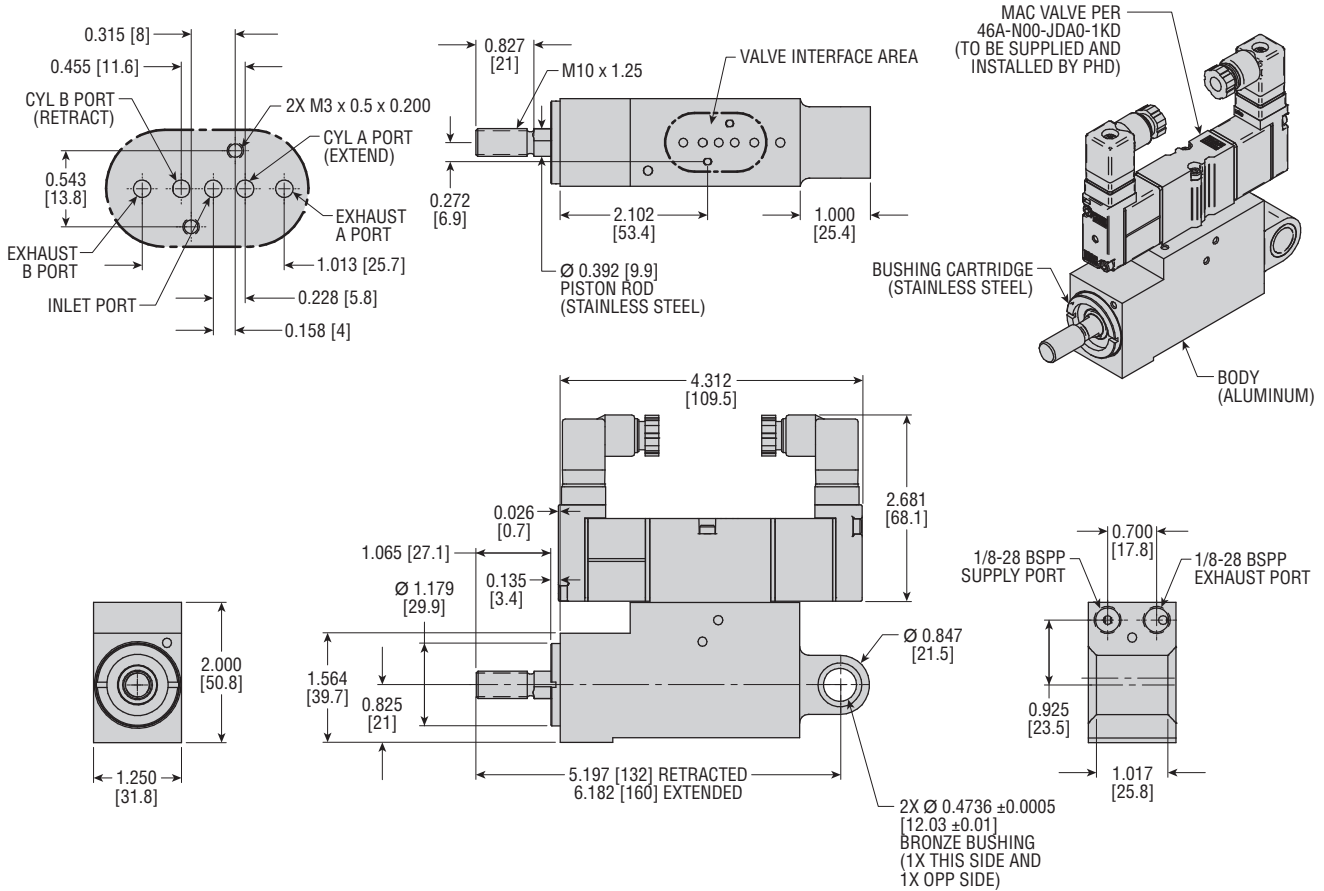


All dimensions are reference only unless specifically tolerated.

ML317408

MAJOR BENEFITS

- Provides rapid repeatable ejection function due to MAC valve design and PHD cylinder.
- High kinetic energy capacity
- Provides faster delivery times than OEM product
- Intended for high speed part rejection
- Unit comes with 25 mm bore x 25 mm stroke



All dimensions are reference only unless specifically toleranced.

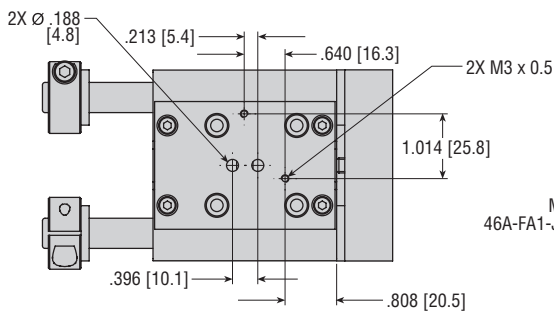
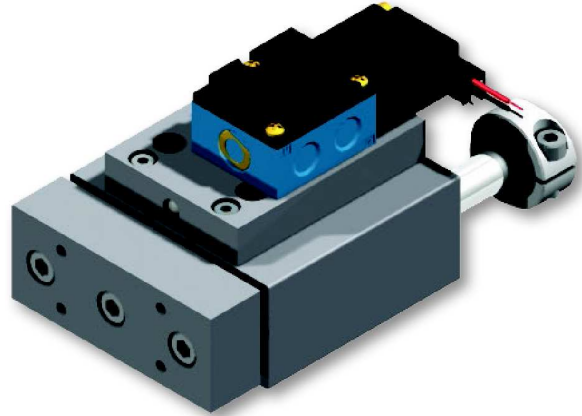
Eject Slide

ML309590

Can be used to replace units provided by TapTone®, Filtec®, and others

MAJOR BENEFITS

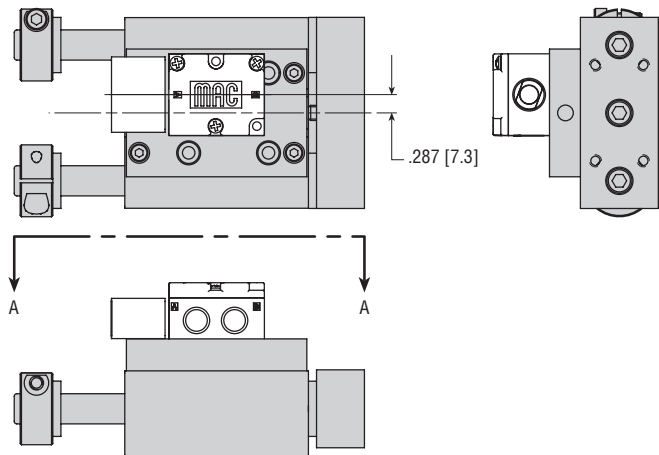
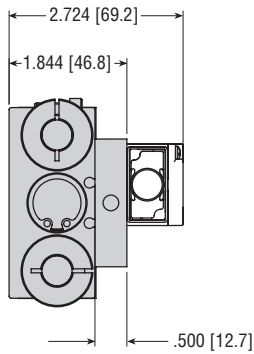
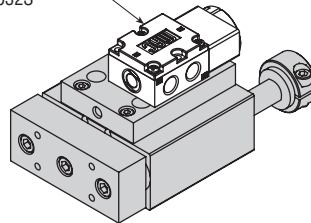
- Provides rapid repeatable ejection function due to MAC valve design and PHD cylinder.
- High kinetic energy capacity
- Eject slide uses proven PHD thruster slide technology
- Provides faster delivery times than OEM product
- In many cases lower cost solution than OEM product
- Intended for high speed part rejection
- Other sizes available to meet application requirements



VIEW A-A
MAC VALVE INTERFACE

- NOTES:**
- 1) MAC VALVE SHOWN FOR REFERENCE ONLY, DISTRIBUTOR TO SUPPLY AND INSTALL
 - 2) MOUNT SLIDE USING THRU AND C'BORES, SLIDE MUST BE MOUNTED PRIOR TO INSTALLING VALVE

MAC VALVE PER
46A-FA1-JAA0-1KA=532S



All dimensions are reference only unless specifically toleranced.