

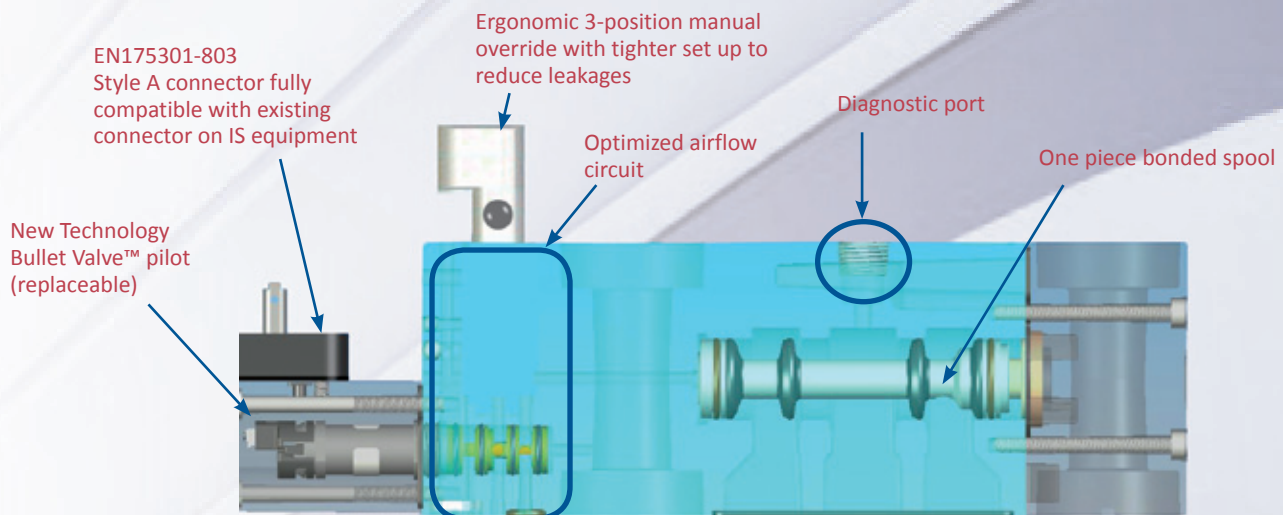


# NEW GENERATION HIGH FLOW Individual Solenoid Valve for 26 Lines Blocks

- | Drop-in solution.
- | High flow characteristics (3000 NI/min) in a very compact package.
- | No cartridges - Spool technology for higher flow, less parts, more reliability
- | Designed to work in harsh environments.
- | MAC technology patented **bullet valve** pilot for a significant increase of the lifetime.
- | High resistance to contamination and pressure variation.
- | Highly durable, accurate switching, increased reliability.
- | Fast switching response times.
- | High temperature modification up to 80°C for complete valve (coil included).
- | Less downtime – Increased production.
- | Fully repairable solenoid valve.
- | Color code to identify NO/NC solenoids (Red = NC / Blue = NO).
- | Diagnostic port on valve body giving direct access into cylinder port for trouble shooting or diagnostic.



## INNOVATIVE FEATURES



FULLY REPAIRABLE UNIT - 100% DROP IN SOLUTION

MAC Valves - Highly engineered solutions for the highest performing applications since 1948



MAC Valves Inc, Wixom, Michigan - MAC Valves Inc, Dundee, Michigan  
MAC Valves Europe Inc, Liège, Belgium - MAC Valves Asia Inc, Taiwan

To find your *local* distributor, visit [www.macvalves.com](http://www.macvalves.com)





# NEW GENERATION HIGH FLOW Individual Solenoid Valve for 26 Lines Blocks

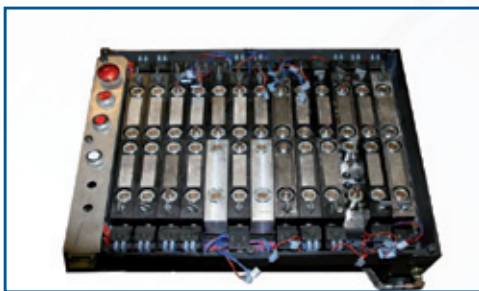
## TECHNICAL DATA

<b>Fluid:</b>	<i>Compressed air, vacuum, inert gases</i>
<b>Pressure range:</b>	<i>External pilot 0 to 8 bar / 0 to 120 PSI</i>
<b>Pilot pressure:</b>	<i>2,5 to 8 bar / 37.5 to 120 PSI</i>
<b>Lubrication:</b>	<i>Not required if used select a medium aniline point lubricant (between 80°C and 100°C / 176°F and 212°F)</i>
<b>Filtration:</b>	<i>40 µ</i>
<b>Temperature:</b>	<i>-18°C to + 80°C / 0°F to 176°F</i>
<b>Flow (at 6 bar, Δ P=1bar):</b>	<i>3000 NI/min / Cv 3.0</i>
<b>Coil:</b>	<i>Epoxy encapsulated - class F wires - long energization</i>
<b>Voltage range:</b>	<i>-15% to +10% of nominal voltage</i>
<b>MOD. EM05 - EM06:</b>	<i>Viton seals, spool and poppet - high temperature grease - glass industry manual override design</i>

## MAC SOLUTION - HOW TO ORDER

<b>Normally closed valve:</b>	<i>EMA-A1B-BV3-BFE0-CTR Mod. EM76</i>
<b>Normally open valve:</b>	<i>EMA-A2B-BV3-BFE0-CTR Mod. EM76</i>
<b>Pilot valve:</b>	<i>BV310A-CD1-00-BFEA-CTA Mod. 8468</i>
<b>Repair kit - NC valve:</b>	
<b>Repair kit - NO valve:</b>	

## ILLUSTRATION



*Previous solution*



*MAC Solution in situ*



## CUSTOMER BENEFITS

- ✓ Balanced design for high flow, high speed and high consistency (not sensitive to pressure variations).
- ✓ High flow (3000 NI/min) for safer and better process accuracy.
- ✓ High speed valve: energized: 8 ms - de-energized: 14,5 ms.
- ✓ Bonded spool with minimum friction, shifting in a glass like finished bore.
- ✓ No lubrication required.
- ✓ Wiping effect eliminates sticking.
- ✓ Proprietary high temperature seals for long life time, resistance to high temperature and aggressive lubrication.
- ✓ High temperature modification for solenoid.
- ✓ Burn out proof MAC solenoid, life time guarantee on coils.
- ✓ 3-position manual override facing the operator on the valve block.
- ✓ 100 million cycles (est) MTBF life time.



3500 factory certified specialists in over 45 countries focused on optimizing customers needs

To find your **MDN** distributor, visit [www.macvalves.com](http://www.macvalves.com)



As we constantly strive to improve production, MAC Valves Inc reserves the right to modify its products. Therefore, this document cannot be considered as contractually binding. All intellectual property rights, including copyright, are reserved by MAC Valves Inc and its associated companies. February 2013 - MAC Valves Europe Inc. All rights reserved