

DWG.NO. HW1381457

Tapped hole M8 (3places),
Depth:16mm,Pitch:1.25mm

Connector for internal user I/O wiring harness:
HR10A-10R-12S (socket connector).
Prepare pin connector: HR10A-10P-12P*HIROSE*

4 Exhaust ports:
Tapped hole M5 (4places)
with pipe plug

Detail B (Scale1:5)

View D (Scale1:6)

Item	Model	MOTOMAN-MH3F
Configuration		Vertically Articulated
Degree of Freedom		6
Payload		3kg
Repeatability		±0.03mm
Range of Motion	S-Axis (Turning)	-160° ~ +160°
	L-Axis (Lower Arm)	-85° ~ +90°
	U-Axis (Upper Arm)	-105° ~ +260°
	R-Axis (Wrist Roll)	-170° ~ +170°
	B-Axis (Wrist Pitch/Yaw)	-120° ~ +120°
	T-Axis (Wrist Twist)	-360° ~ +360°
Maximum Speed	S-Axis	3.49rad/s,200°/s
	L-Axis	2.62rad/s,150°/s
	U-Axis	3.32rad/s,190°/s
	R-Axis	5.24rad/s,300°/s
	B-Axis	5.24rad/s,300°/s
	T-Axis	7.33rad/s,420°/s
Allowable Moment	R-Axis	5.39N·m (0.55kgf·m)
	B-Axis	5.39N·m (0.55kgf·m)
	T-Axis	2.94N·m (0.3 kgf·m)
Allowable Inertia (GD ² /4)	R-Axis	0.10 kg·m ²
	B-Axis	0.10 kg·m ²
	T-Axis	0.03 kg·m ²
Approx. Mass		27kg
Ambient Conditions	Temperature	0 to 40℃
	Humidity	20 to 80%RH (at constant temperature)
	Vibration Acceleration	Less than 4.9m/s ² (0.5G)
	Others	•Free from corrosive gas or liquid, or explosive gas. •Free from water,oil,or dust. •Free from excessive electrical noise (plasma).
Power Requirements		0.5KVA

SI units are used in this table.
However,gravitational unit is used in ().
Repeatability is conformed to ISO 9283.

(Note1) Shows the LU-axis working envelope within the range of S-axis motion : -40° to 40°.
(Note2) Shows the LU-axis working envelope within the range of S-axis motion : -160° to -125° or 125° to 160°.

Tapped hole M5 (4places),
Depth:9mm,Pitch:0.8mm

Note1

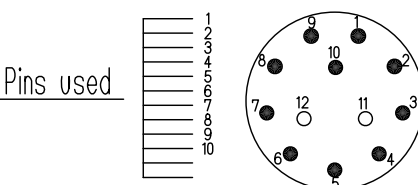
Note2

4 Air inlets:
Tapped hole M5 (4places)
with pipe plug

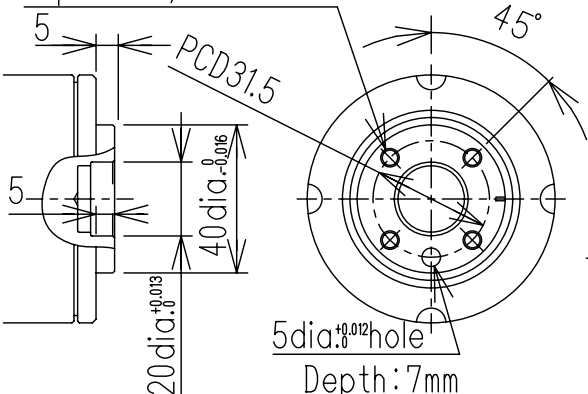
Connector for internal user I/O wiring harness:
HR10A-10R-12P (pin connector).
Prepare socket connector: HR10A-10P-12S*HIROSE*

Internal user I/O Wiring harness:0.2mm²,10wires

Pins used

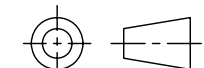


Details of the Connector Pin Numbers View C (Scale1:4)



View A (Scale1:2)

Note:
1. All rights reserved.
2. Please note that the data is subject to be deleted without advance notice.
3. No warranty is given in relation to the data including the specification.
4. We are not responsible for any damages or loss caused by the use of the data



SCALE 1:10

YASKAWA

株式会社 安川電機

Reference Drawing

TITLE MOTOMAN-MH3F
DIMENSION DIAGRAM

DWG.NO.

HW1381457

FOR STUDY PURPOSE ONLY

This drawing is applicable with following type.

Type	Note
YR-MH003F-A00	standard

SIZE A3