

Datasheet

26A - 11 - G01 - BD - BKRO - 1PN / 5910 (12 Watt with integrated PWM circuit)

MAIN FEATURES

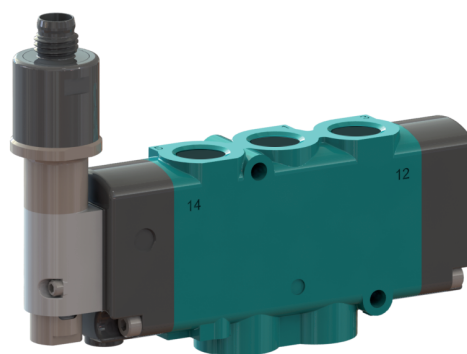
- 5-way pilot operated poppet valve
- 3-way diaphragm Bullet Valve® pilot
- ROHS
- Response time adjusted on all valves
- Internal pilot valve (external pilot available on request)
- Specifically designed for:
 - high temperature (hot melt dispensing)
 - high speed
 - consistent and repeatable shifting times
 - limited first shot effect
 - built-in power reduction circuit

TECHNICAL DATA

Fluid:	Compressed air or inert gases
Lubrication:	Not required. If used, select a medium aniline point lubricant (between 80°C and 100°C)
Temperature operating range:	0°C to 80°C
Pressure range:	3 to 6 bar
Flow:	250 NI/min
Voltage:	24 VDC (-10% / +15%) Coil overvolting not allowed
Response times: *	ERT: 3.0 ms DRT: 3.2 ms
Maximum frequency:	350 Hz (35% duty cycle)

* Values tested per lab test with following conditions:

- Inlet pressure 6.0 bar
- Electric signal 24VDC (1Hz-10.0ms ON time)
- 20°C ambient temperature
- No output volume



DISCLAIMER

The values indicated in the section 'Installation Specifications' above are for information purposes only. Our products are tested according to the production tests as described in the MAC Valves assembly instructions and modification if applicable.

As we constantly strive to improve production, MAC Valves Inc. reserves the right to modify its products without notice. Therefore, this document cannot be considered contractually binding. All intellectual property rights, including copyright, are reserved by MAC Valves Inc. and its associated companies.

MAC Valves Inc, Wixom, Michigan - MAC Valves Inc, Dundee, Michigan
MAC Valves Europe Inc, Liège, Belgium - MAC Valves Asia Inc, Taiwan

To find your local distributor, visit www.macvalves.com

Datasheet

26A - 11 - G01 - BD - BKRO - 1PN / 5910 (12 Watt with integrated PWM circuit)

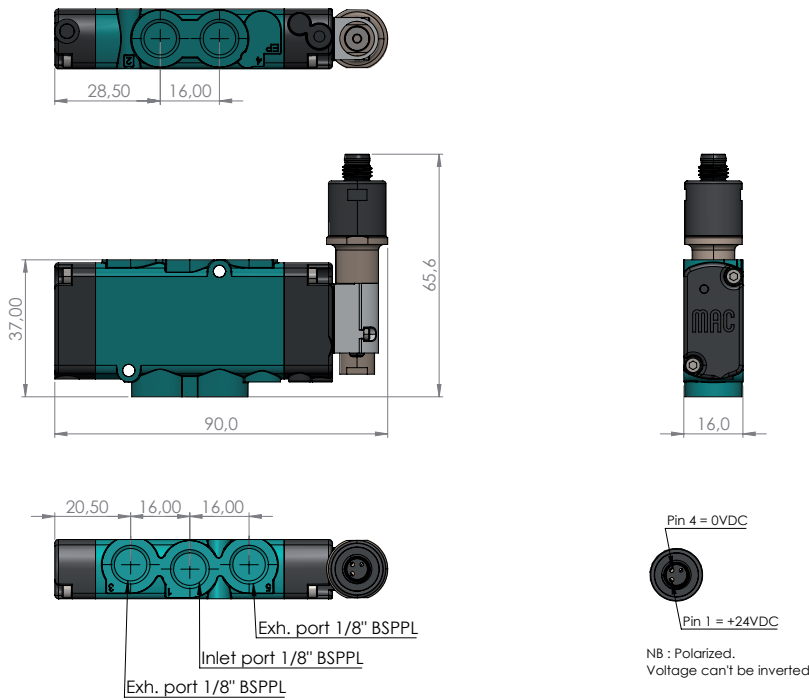
HOW TO ORDER



VALVE DRAWING

All dimensions are metric

Reference shown: 26A - 11 - E01 - BD - BKRO - 1PN / 5910



DISCLAIMER

The values indicated in the section 'Installation Specifications' above are for information purposes only. Our products are tested according to the production tests as described in the MAC Valves assembly instructions and modification if applicable.

As we constantly strive to improve production, MAC Valves Inc. reserves the right to modify its products without notice. Therefore, this document cannot be considered contractually binding. All intellectual property rights, including copyright, are reserved by MAC Valves Inc. and its associated companies.



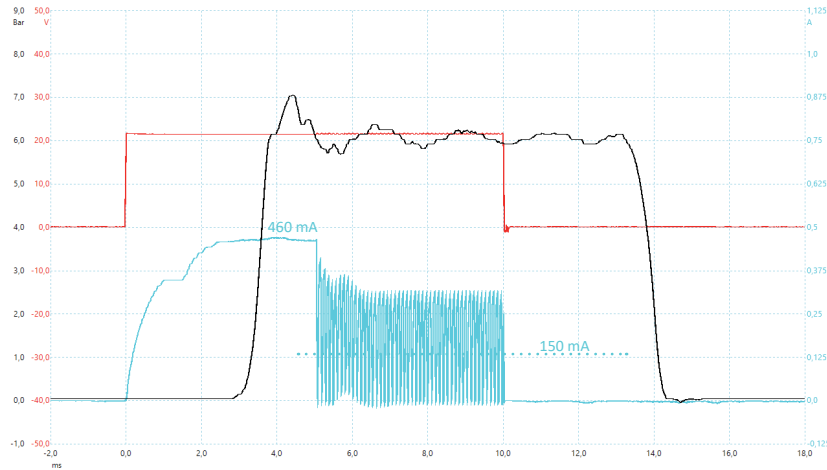
Datasheet

26A - 11 - G01 - BD - BKRO - 1PN / 5910

(12 Watt with integrated PWM circuit)

VALVE PERFORMANCE TESTS

Response times test*



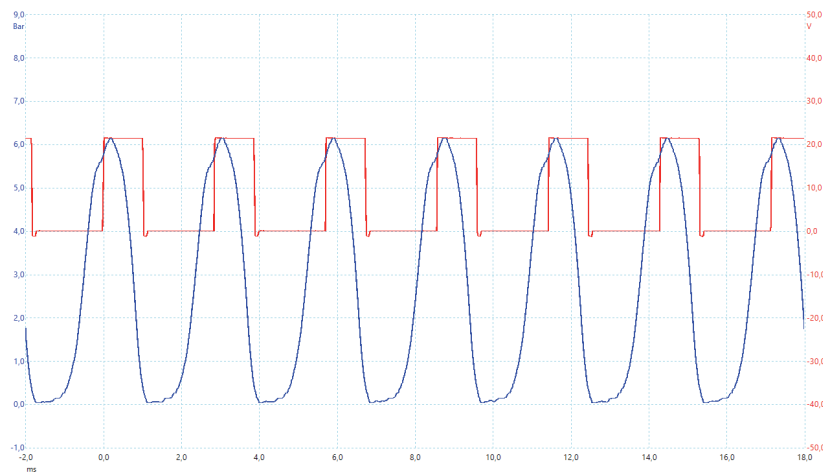
Legend

Trigger signal 1Hz – 10ms
Current through the coil
Air pulse at the outlet

* Values tested per lab test with following conditions:

- Inlet pressure 6.0 bar
- Electric signal 24VDC (1Hz-10.0ms ON time)
- 20°C ambient temperature
- No out put volume

Maximum frequency test*



Legend

Trigger signal 350Hz – 35%
Air pulse at the outlet

* Values tested per lab test with following conditions:

- Inlet pressure 6.0 bar
- Electric signal 24VDC (350Hz-1.0ms ON time)
- 20°C ambient temperature
- No out put volume

DISCLAIMER

The values indicated in the section 'Installation Specifications' above are for information purposes only. Our products are tested according to the production tests as described in the MAC Valves assembly instructions and modification if applicable.

As we constantly strive to improve production, MAC Valves Inc. reserves the right to modify its products without notice. Therefore, this document cannot be considered contractually binding. All intellectual property rights, including copyright, are reserved by MAC Valves Inc. and its associated companies.